

# CLIPS AND RIVETS

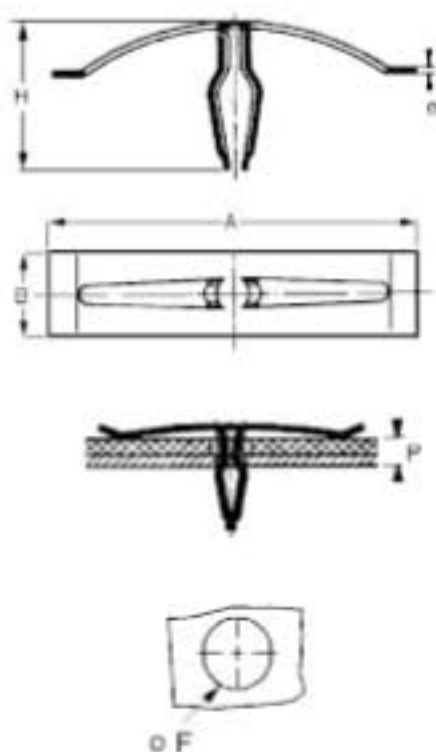
## Metal clips

### Recommended use:

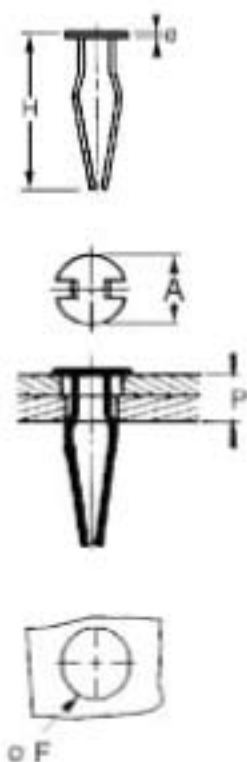
Lightweight panel assemblies. Manual assembly.  
Easy to dismantle and reuse.



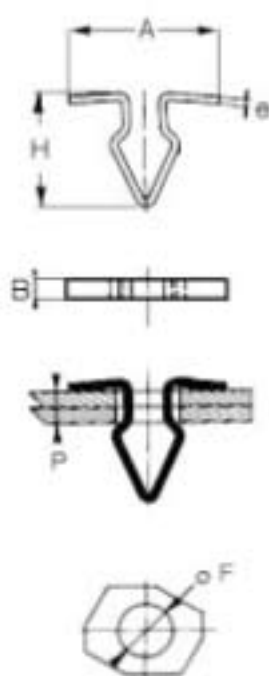
### TYPE 1



### TYPE 2



### TYPE 3



P = PANEL THICKNESS	REFERENCE	H	A	B	e	Ø F	TYPE
1.5 to 2	C.4747 ▲	12	20	3	0.6	6	3
2.1 to 2.8	C.4718 ▲	13.5	17.2	3	0.6	6	3
3 to 4	C.4774 DC	18	Ø 7.2		0.5	4.5	2
3.6 to 4.5	C.47261 PV	18	44	9	0.5	5	1

### Recommended assembly method:

Install manually by simply pressing into place.

### CLIP

<b>MATERIAL</b>	Treated spring steel
<b>SURFACE</b>	See table on cover flap
<b>TREATMENT</b>	Except for parts with reference "▲": Phosphating
<b>COLOUR</b>	See table on cover flap Except for parts with reference "▲": Black point