

## FASTENERS FOR PANELS

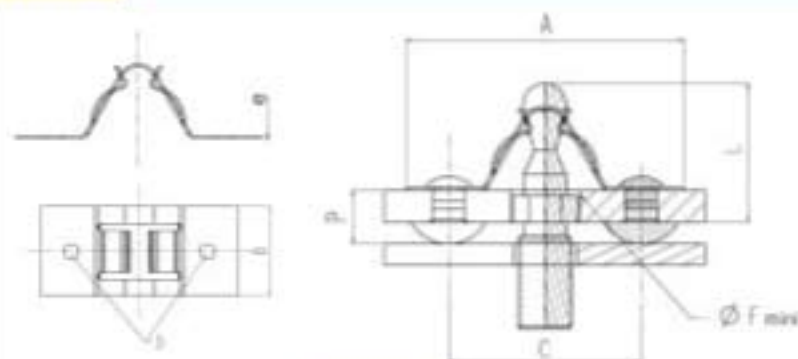
### Closing systems, large model

#### Recommended use:

These systems consist of a stud that clips into a fastener composed of spring blades. The fasteners are screwed or riveted to their substrate. The fastener is opened and closed by simple pulling or pressing force.



#### FASTENER

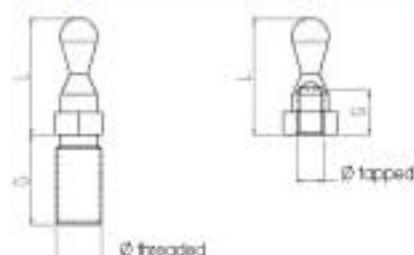


REFERENCE	A*	B	C*	D	e	Ø F min.	AVERAGE INSERTION FORCE** (DaN)	AVERAGE EXTRACTION FORCE** (DaN)
C 4402-4-52	51	18	38	5	0.4	10.5	2.5	2.5
C 4402-5-52	51	18	38	5	0.5	10.5	5	5
C 4402-6-52	51	18	38	5	0.6	10.5	10	10
C 4402-7-52	51	18	38	5	0.7	10.5	15	15

\* Dimensions A and C refer to the assembled part.

\*\* Average force recorded in the test lab on a typical assembly.

#### STUD



P = PANEL THICKNESS	L	REFERENCE	Ø	G
1.5 to 5	25	R 6523	M4 threaded	10
1.5 to 5	25	R 10292	M6 threaded	10
4 to 7.5	27.4	R 6775	M5 threaded	7

The thickness P must include the height of the fixing element of the fastener (screw head or rivet).

	FASTENER	STUD
<b>MATERIAL</b>	Treated spring steel	Steel
<b>SURFACE TREATMENT</b>	Phosphating	Zinc plating
<b>TREATMENT</b>	+ Paint	
<b>COLOUR</b>	Black	White